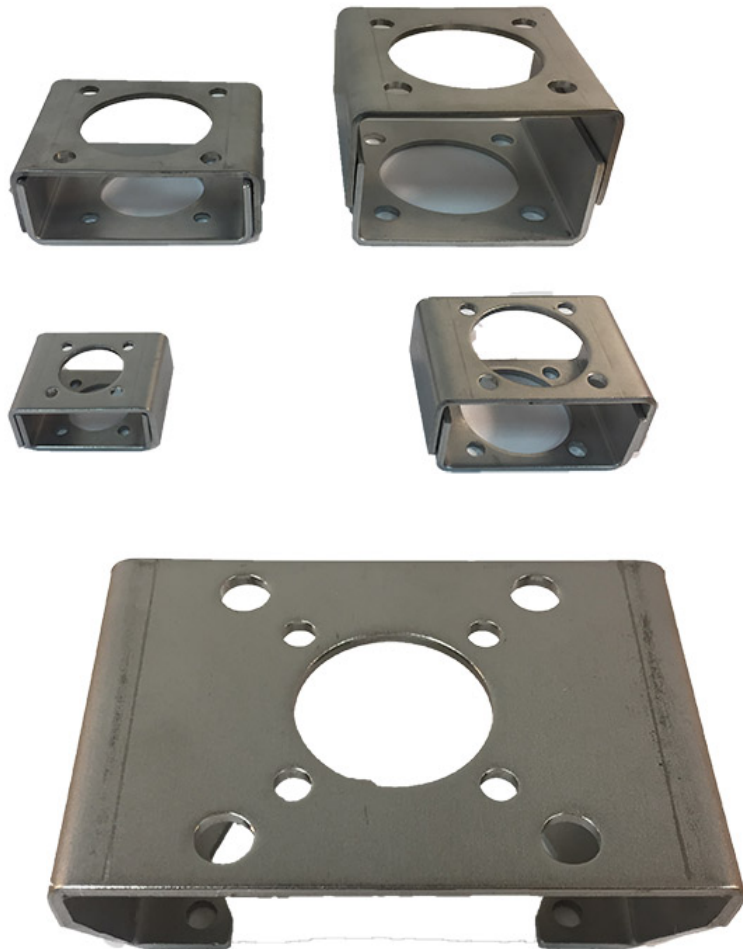


# Easytork

---

## Hardware



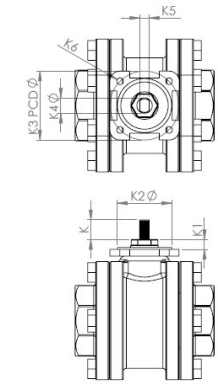
# Easytork Mounting Bracket (“EMB”) and Fixture

Easytork supplies EMB and Mounting Bracket Fixture (“MBF”). The EMB is a loose piece, kit-based, mounting bracket that can be easily and precisely conjoined to create a mounting bracket with the appropriate specifications including height and mounting patterns.

Users can quickly and precisely weld loose EMB parts into an integral bracket through the MBF. MBF has accurate centerlines to allow loose EMBs of various mounting patterns to be welded together at any desired height. The conjoined EMB has perfect alignment.

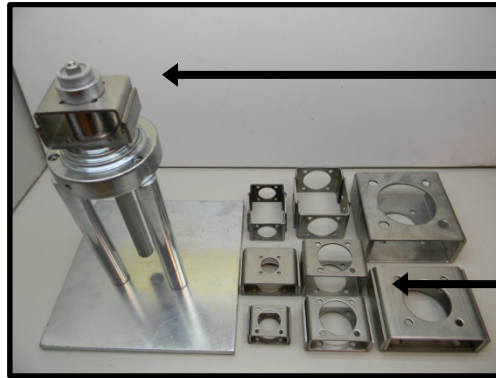
EMB and EVA’s extended lower shaft direct mount to the valve stem. This creates stability, stiffness and perfect alignment between actuator and valve stem in all mounting positions. This avoids fugitive emission of the stem packing or malfunctioning of the valve.

## Multiple Selections and Possibilities



### Valve Topwork Dimensions

Customer to provide valve dimensions. Weld EMB height as needed.

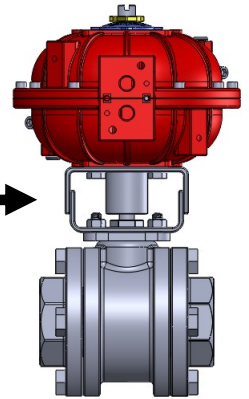


### Heavy Duty Construction

The EMB is supplied in SS304 material for rigid design and corrosion resistance.

**MBF**  
Used to weld together loose EMBs

**EMB**  
Pic. shows loose and assembled brackets

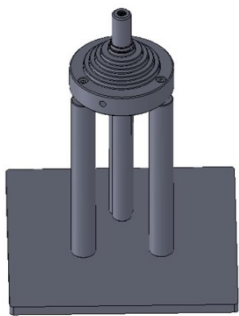


**Patents: Flexible Integral Mounting Bracket**

Taiwan = M447445, other countries pending

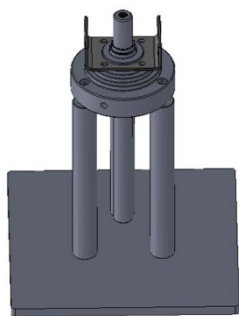
## Bracket Assembly Method

Users can quickly and precisely weld loose EMBs into an integral bracket through the MBF.



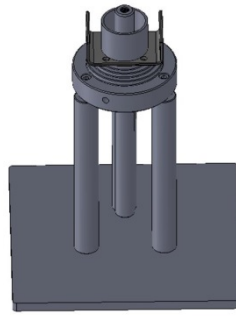
Step 1

MBF has F03S through F14XL center ring slots.



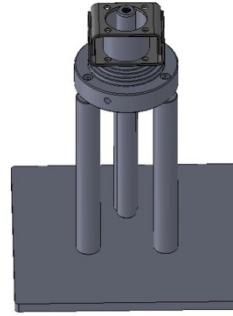
Step 2

Select required bottom bracket and place on center ring slot.



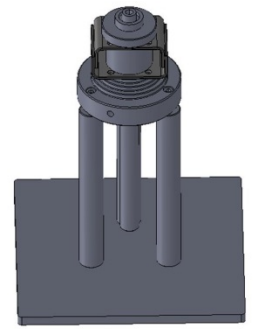
Step 3

Install proper height gauge to justify the bracket height.



Step 4

Select required top bracket.

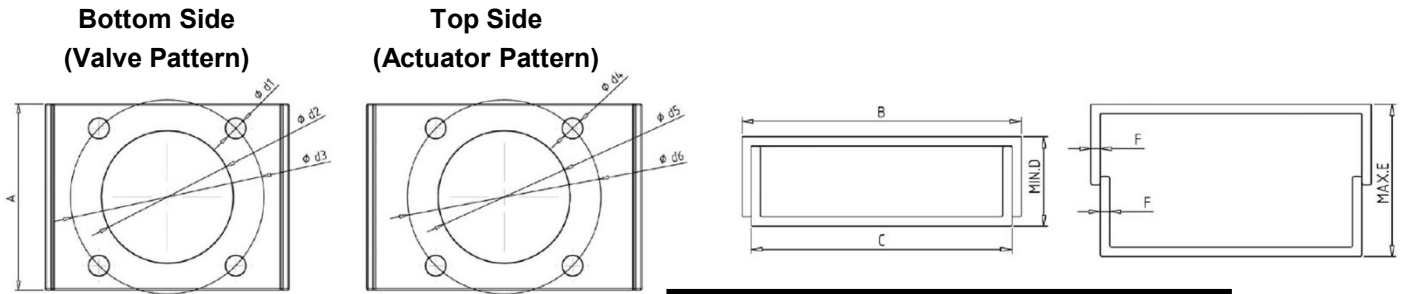


Step 5

Install proper center ring fixture to top bracket and fasten the whole assembly before welding.



# Easytork Mounting Bracket Dimensions



## Metric

Mix and match any Bottom Side and Top Side bracket within the same series.

Bottom Side (ie. Valve Pattern) Availability	Top Side (ie. Actuator Pattern) Availability	Dimensions (mm)											
		Top & Bottom Joint Dimension						Bottom Dimension			Top Dimension		
		A	B	C	F	MIN.D	MAX.E	Ød1	Ød2	Ød3	Ød4	Ød5	Ød6
<b>S Series Bracket</b>													
F03S	F03S	50	66	60	3	30	50	5.3	25	36	5.3	25	36
F04S	F04S							5.3	30	42	5.3	30	42
F05S	F05S							6.4	35	50	6.4	35	50
<b>M Series Bracket</b>													
F03M	F03M	70	100	92	4	42	62	5.3	25	36	5.3	25	36
F04M	F04M							5.3	30	42	5.3	30	42
F05M	F05M							6.4	35	50	6.4	35	50
F07M	F07M							8.4	55	70	8.4	55	70
<b>L Series Bracket</b>													
F07L		120	150	140	5	52	80	8.4	55	70			
F10L	F10L							10.5	70	102	10.5	70	102
F12L	F12L							13.0	85	125	13.0	85	125
<b>XL Series Bracket</b>													
F10XL		160	160	150	5	70	100	10.5	70	102			
F12XL								13.0	85	125			
F14XL	F14XL							17.0	100	140	17.0	100	140

## Imperial

Bottom Side (ie. Valve Pattern) Availability	Top Side (ie. Actuator Pattern) Availability	Dimensions (inch)											
		Top & Bottom Joint Dimension						Bottom Dimension			Top Dimension		
		A	B	C	F	MIN.D	MAX.E	Ød1	Ød2	Ød3	Ød4	Ød5	Ød6
<b>S Series Bracket</b>													
F03S	F03S	1.97	2.60	2.36	0.12	1.18	1.97	0.21	0.98	1.42	0.21	0.98	1.42
F04S	F04S							0.21	1.18	1.65	0.21	1.18	1.65
F05S	F05S							0.25	1.38	1.97	0.25	1.38	1.97
<b>M Series Bracket</b>													
F03M	F03M	2.76	3.94	3.62	0.16	1.65	2.44	0.21	0.98	1.42	0.21	0.98	1.42
F04M	F04M							0.21	1.18	1.65	0.21	1.18	1.65
F05M	F05M							0.25	1.38	1.97	0.25	1.38	1.97
F07M	F07M							0.33	2.17	2.76	0.33	2.17	2.76
<b>L Series Bracket</b>													
F07L		4.72	5.91	5.51	0.20	2.05	3.15	0.33	2.17	2.76			
F10L	F10L							0.41	2.76	4.02	0.41	2.76	4.02
F12L	F12L							0.51	3.35	4.92	0.51	3.35	4.92
<b>XL Series Bracket</b>													
F10XL		6.30	6.30	5.91	0.20	2.76	3.94	0.41	2.76	4.02			
F12XL								0.51	3.35	4.92			
F14XL	F14XL							0.67	3.94	5.51	0.67	3.94	5.51

Note      : Mix and match any Bottom Side and Top Side ISO pattern within the same Series. For example, F03S-F03S, F03S-F04S, F03S-F05S, F04S-F03S, F04S-F04S, F04S-F05S, F05S-F03S, F05S-F04S, F05S-F05S.

# Butterfly Valve Spacer Plate Dimensions

BFV Size	EVA-0309	EVA-0411	EVA-0514	EVA-0717	EVA-1022	EVA-1227	EVA-1436
----------	----------	----------	----------	----------	----------	----------	----------

## Keystone and Similar Butterfly Valve

2"	Metric order code = P-1-82.6mm-F05-16.0mm	Metric order code = P-1-82.6mm-F05-11.0mm	Designates Tapped Design
2.5"	Imperial order code = P-1-3.25in-F05-0.63in	Imperial order code = P-1-3.25in-F05-0.43in	
3"			Designates Through Design
4"			
5"			
6"			
8"			
10"			
12"			
14"			
16"			

Metric order code = P-1-F1012-F1012-6.0mm  
Imperial order code = P-1-F1012-F1012-0.24in

Note: Individual plates can be stacked to achieve desired height

## Centerline, ABZ and Similar Butterfly Valve

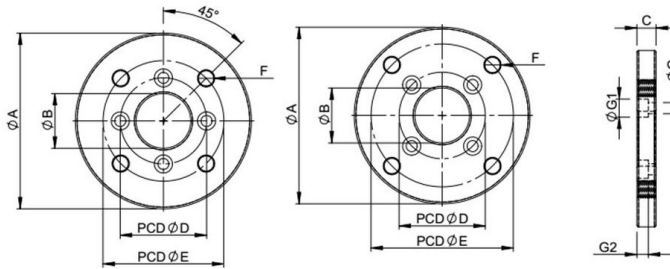
2"	Metric order code = P-1-F07-F05-16.0mm	Metric order code = P-1-F07-F07-6.0mm	Designates Tapped Design
2.5"	Imperial order code = P-1-F07-F05-0.63in	Imperial order code = P-1-F07-F07-0.24in	
3"			Designates Through Design
4"			
5"			
6"			
8"			
10"			
12"			
14"			
16"			

Metric order code = P-1-F1012-F1012-6.0mm  
Imperial order code = P-1-F1012-F1012-0.24in

Note: Individual plates can be stacked to achieve desired height

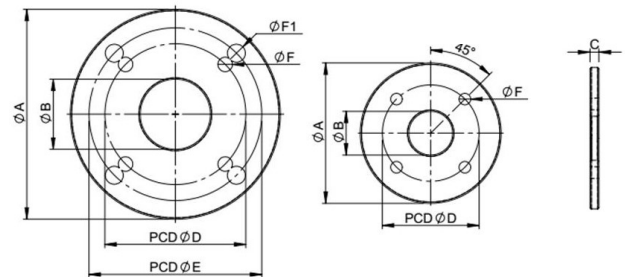
### Spacer Plate With Tapped Hole

Tapped hole to interface valve side.



### Space Plate With Through Hole

Through hole allows multiple plates to be stacked to achieve desired height.



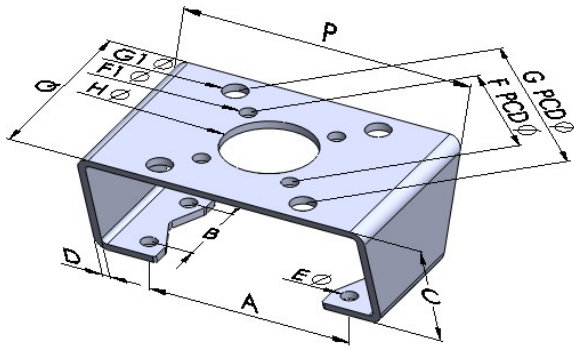
## Metric

Dimensions (mm)	Plate Ordering Code				
	P-1-82.6mm-F05-16.0mm	P-1-82.6mm-F05-11.0mm	P-1-F07-F05-16.0mm	P-1-F07-F07-6.0mm	P-1-F1012-F1012-6.0mm
Type	Tapped	Tapped	Tapped	Through	Through
A Ø	102.0	102.0	102.0	102.0	152.0
B Ø	31.8	31.8	31.8	31.8	50.8
C	16.0	11.0	16.0	6.0	6.0
D Ø	50.0 / F05	50.0 / F05	50.0 / F05	70.0 / F07	102.0 / F10
For	EVA	EVA	EVA	Valve & EVA	Valve & EVA
E Ø	82.6	82.6	70.0 / F07		125.0 / F12
For	Valve	Valve	Valve		Valve & EVA
F Ø	M8	M8	M8	8.4	10.5
F1 Ø					13.0
G Ø	6.4	6.4	6.4		
G1 Ø	10.5	10.5	10.5		
G2	6.5	6.5	6.5		

## Imperial

Dimensions (inch)	Plate Ordering Code				
	P-1-3.25in-F05-0.63in	P-1-3.25in-F05-0.43in	P-1-F07-F05-0.63in	P-1-F07-F07-0.24in	P-1-F1012-F1012-0.24in
Type	Tapped	Tapped	Tapped	Through	Through
A Ø	4.02	4.02	4.02	4.02	5.98
B Ø	1.25	1.25	1.25	1.25	2.00
C	0.63	0.43	0.63	0.24	0.24
D Ø	1.97 / F05	1.97 / F05	1.97 / F05	2.76 / F07	4.02 / F10
For	EVA	EVA	EVA	Valve & EVA	Valve & EVA
E Ø	3.25	3.25	2.76 / F07		4.92 / F12
For	Valve	Valve	Valve		Valve & EVA
F Ø	3/8-16	3/8-16	5/16-18	0.33	0.41
F1 Ø					0.51
G Ø	0.25	0.25	0.25		
G1 Ø	0.41	0.41	0.41		
G2	0.26	0.26	0.26		

# NAMUR Mounting Bracket



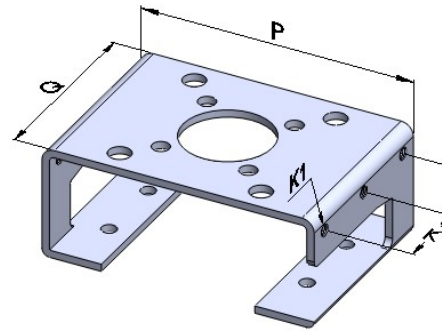
Limit Switch Bracket - Standard

## Metric

Dimensions (mm)	Limit Switch Bracket Ordering Code		
	LB-2- 30x80mm- 45mm-X	LB-2- 30x80mm- 55mm-X	LB-2- 30x130mm- 55mm-X
A	80.0	80.0	130.0
B	30.0	30.0	30.0
C	45.0	55.0	55.0
D	3.0	3.0	3.0
E Ø	6.0	6.0	6.0
F PCD Ø	50.0	50.0	50.0
F1 Ø	7.0	7.0	7.0
G PCD Ø	80.8	80.8	80.8
G1 Ø	9.0	9.0	9.0
H Ø	36.0	36.0	36.0
P	114.5	114.5	165.0
Q	76.0	76.0	76.0

## Imperial

Dimensions (inch)	Limit Switch Bracket Ordering Code		
	LB-2- 30x80mm- 45mm-X	LB-2- 30x80mm- 55mm-X	LB-2- 30x130mm- 55mm-X
A	3.15	3.15	5.12
B	1.18	1.18	1.18
C	1.77	2.17	2.17
D	0.12	0.12	0.12
E Ø	0.24	0.24	0.24
F PCD Ø	1.97	1.97	1.97
F1 Ø	0.28	0.28	0.28
G PCD Ø	3.18	3.18	3.18
G1 Ø	0.35	0.35	0.35
H Ø	1.42	1.42	1.42
P	4.51	4.51	6.50
Q	2.99	2.99	2.99



Limit Switch Bracket for Wrench Manual Override

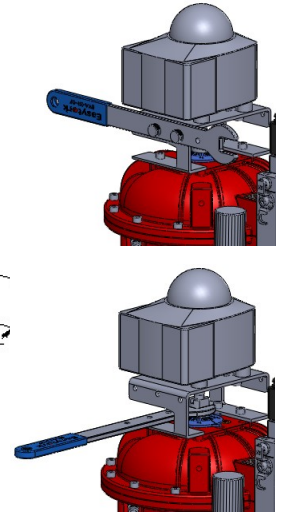
Includes tapped hole to store wrench, and access space to allow wrench to turn upper shaft.

## Metric

Dimensions (mm)	Limit Switch Bracket Ordering Code	
	LB-2-25x50mm- 45mm-WR	LB-2-30x80mm- 45mm-WR
A	50.0	80.0
B	25.0	30.0
C	45.0	45.0
D	3.0	3.0
E Ø	6.0	6.0
F PCD Ø	50.0	50.0
F1 Ø	7.0	7.0
G PCD Ø	80.8	80.8
G1 Ø	9.0	9.0
H Ø	36.0	36.0
P	100.0	110.0
Q	76.0	76.0
K	25.0	30.0
K1	M5	M5

## Imperial

Dimensions (inch)	Limit Switch Bracket Ordering Code	
	LB-2-25x50mm- 45mm-WR	LB-2-30x80mm- 45mm-WR
A	1.97	3.15
B	0.98	1.18
C	1.77	1.77
D	0.12	0.12
E Ø	0.24	0.24
F PCD Ø	1.97	1.97
F1 Ø	0.28	0.28
G PCD Ø	3.18	3.18
G1 Ø	0.35	0.35
H Ø	1.42	1.42
P	3.94	4.33
Q	2.99	2.99
K	0.98	1.18
K1	M5	M5

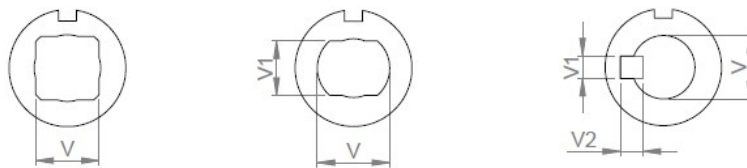


# Ordering Codes

## EVA Drive Insert

Product Type	Type of Insert			Insert Measurement		
	Actuator Size	Insert Material (Corrosion Rating)	Drive Insert Type	Drive Insert Size (Measurement of Valve Stem)		
<b>D</b>	-	<b>X</b>	<b>X</b>	-	<b>X</b>	<b>XX</b>
<b>D</b> : Actuator drive insert	1: EVA-0309 2: EVA-0411 3: EVA-0514 4: EVA-0717 5: EVA-1022 6: EVA-1227 7: EVA-1436 8: EVA-1646	1: Standard version 2: Chemical resistant version	1: Square drive 2: Double d 3: Keyway 4: Blank (with a hole drilled) 0: Custom	If Sqr: Flat (V) x flat (V) If DD: Circle diameter (V) x flat (V1) If Key: Circle diameter (V) x key (V1) x key (V2) Format: 0.00mm 0.000in	in: In inches mm: In millimeter	
Leave section empty for blank inserts						

Measurements V, V1 and V2 reflect valve stem dimensions. Inserts subsequently made with appropriate tolerance for valve stem interface.



## Spacer Plate for Butterfly Valves

Product Type	Plate Material	Flange Description		Plate Height
	Plate Material (Corrosion Rating)	Valve Flange Available	Actuator Flange Available	Plate Height
<b>P</b>	-	<b>X</b>	-	<b>X</b>
<b>P</b> : Spacer plate for butterfly valve	1: Standard version 2: Chemical resistant version	If ISO pattern <b>F05</b> : F05 <b>F07</b> : F07 <b>F1012</b> : F10 & F12  If non-ISO, define by PCD dimension Format 0.0mm 0.00in	Define by ISO pattern <b>F05</b> : F05 <b>F07</b> : F07 <b>F1012</b> : F10 & F12	Define by height dimension Format 0.0mm 0.00in
				Note: "mm" or "in" designates metric or imperial threading for tapped plate designs

# Ordering Codes

## Direct and Semi-Direct EVA Shafts

Prefix	Product Type	Type of Shaft		Shaft Attributes	
		Actuator Size	Shaft Material (Corrosion Rating)	Shaft Orientation	Shaft Type
<b>K</b>	<b>AS</b>	<b>X</b>	<b>X</b>	<b>X</b>	<b>X</b>
<b>K</b> : Kit	<b>AS</b> : Actuator shaft	1: EVA-0309 2: EVA-0411 3: EVA-0514 4: EVA-0717 5: EVA-1022 6: EVA-1227 7: EVA-1436 8: EVA-1646	1: Standard version 2: Chemical resistant version	1: Lower shaft (standard, 1 valve operation)	1: Direct mount 2: Semi-direct mount 0: Custom  Note: For custom shafts, call for custom made shafts.

## Limit Switch Bracket

Product Type	Bracket Material	Flange Measurement	Bracket Height	Version
	Bracket Material (Corrosion Rating)	Actuator's VDI/VDE 3845 Measurement	Total Limit Switch Bracket Height	Wrench Accessible
<b>LB</b>	<b>X</b>	<b>X</b>	<b>X</b>	<b>X</b>
<b>LB</b> : Limit switch bracket	<b>2</b> : Chemical resistant version	Width x length <i>Format:</i> 0mm	Height <i>Format:</i> 0mm	<b>X</b> : Non-wrench accessible <b>WR</b> : For wrench manual override

## Easytork's Stock Standard Limit Switch Bracket Stocking

<b>LB</b>	-	<b>2</b>	-	<b>30x80mm</b>	-	<b>45mm</b>	-	<b>X</b>
<b>LB</b>	-	<b>2</b>	-	<b>30x80mm</b>	-	<b>55mm</b>	-	<b>X</b>
<b>LB</b>	-	<b>2</b>	-	<b>30x130mm</b>	-	<b>55mm</b>	-	<b>X</b>
<b>LB</b>	-	<b>2</b>	-	<b>25x50mm</b>	-	<b>45mm</b>	-	<b>WR</b>
<b>LB</b>	-	<b>2</b>	-	<b>30x80mm</b>	-	<b>45mm</b>	-	<b>WR</b>

Note: For dimensions not listed above, call for custom made limit switch brackets. Easytork does not readily stock limit switch brackets not listed

# Ordering Codes

## Mounting Bracket

<u>Product Type</u>	<u>Bracket Material</u>	<u>Loose Bracket Parts</u>		<u>If Welded</u>
	Bracket Material (Corrosion Rating)	Bottom Side Valve Pattern	Top Side Actuator Pattern	Fill Section Only If Welding Done By Easytork
<b>B</b>	- <b>X</b>	- <b>X</b>	- <b>X</b>	- <b>X</b>
<b>B:</b> Easytork mounting bracket	<b>2:</b> Stainless steel (SS304)	Mix and Match Within S Series <b>F03S, F04S, F05S</b>	Mix and Match Within M Series <b>F03M, F04M, F05M, F07M</b>	Define by total height dimension (refer to MIN.D and MAX.E)
		Mix and Match Within L Series <b>F07L, F10L, F12L</b>	Mix and Match Within XL Series <b>F10XL, F12XL, F14XL</b>	<i>Format:</i> 0.0mm 0.00in
		<b>0:</b> Custom		<b>X:</b> None

## Mounting Bracket Fixture

<u>Prefix</u>	<u>Product Type</u>	<u>Model</u>	<u>Bracket Range</u>
<b>C</b>	- <b>MBF</b>	- <b>X</b>	- <b>X</b>
<b>C:</b> Complete product	<b>MBF:</b> Mounting bracket fixture	<b>1:</b> Easytork MBF	<b>1:</b> F03S - F14XL

<p><b>About</b></p> <p>We believe in selling “easy”. Easytork brings differentiating features and benefits to the process control industry through our focus on innovation and quality. Easytork has been awarded numerous awards including:</p> <p>2013 – Arch Grants Recipient</p> <p>2015 – Accelerate St. Louis</p> <p>2017 – Frost &amp; Sullivan Product Innovation Award</p>	<p><b>Global Headquarters</b></p> <p>2505 Metro Blvd, Suite A / B Maryland Heights, MO 63043 USA</p> <p>Main Tel: +1-314-266-0670 Main Fax: +1-314-222-7057 info@easytork.com www.easytork.com</p>
---	--